

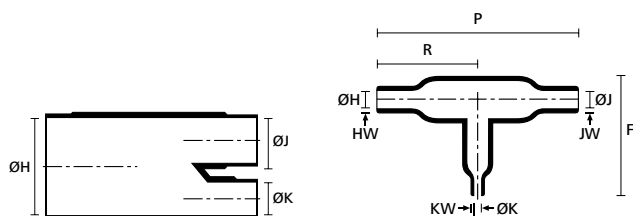


### T-Shapes, VG-Style

#### Helashrink 1200 Series, off-set

#### Features and benefits

- For strain relief, sealing and mechanical protection
- Use adhesive for cable transition on harness, if environmental sealing is required



a: Expanded form (supplied)

b: Fully recovered form (after heating)



1204-1 supplied / fully recovered.

TYPE	ØH min. a	ØH max. b	ØJ min. a	ØJ max. b	ØK min. a	ØK max. b	P ± 10%	R ± 10%	HW ± 20%	JW ± 20%	KW ± 20%	F ± 15%	Designation as per VG-Norm	Article-No.
1204-1-G	13.0	7.5	6.5	4.0	6.5	4.0	56.0	33.0	1.5	1.0	1.0	27.0	VG 95343 T08 A 016 A	412-04180
1216-1-G	33.0	13.0	16.5	6.5	16.5	6.5	97.0	54.0	2.5	1.5	1.5	-	VG 95343 T08 A 017 A	412-16180

All dimensions in mm. Subject to technical changes. For these moulded shapes a wide range of material / adhesive combinations are available. Please refer to the Moulded Shapes catalogue.



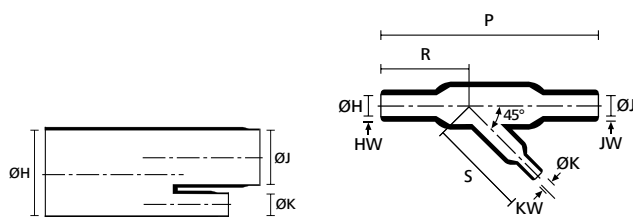
For product specific approvals and specifications please refer to the Appendix.

### Angled T-Shapes, VG style

#### Helashrink 1300 Series, 30° & 45° angle

#### Features and benefits

- Strain relief, sealing and mechanical protection on cable harnesses
- Branching part 30° & 45° Y-joint
- Mechanical strain relief for cable harnesses



a: Expanded form (supplied)

b: Fully recovered form (after heating)



1303-1-G supplied / fully recovered.

TYPE	ØH min. a	ØH max. b	ØJ min. a	ØJ max. b	ØK min. a	ØK max. b	P ± 10%	R ± 10%	HW ± 30%	JW ± 30%	KW ± 20%	S ± 10%	Angle	Designation as per VG-Norm	Article-No.
1306-1-G	13.0	6.0	6.5	3.0	6.5	3.0	45.0	23.0	1.5	1.0	1.0	21.5	45°	VG 95343 T06 B 010 A	413-06180
1301-1-G	13.0	7.0	13.0	7.0	7.0	3.5	50.0	23.0	1.5	1.5	1.0	23.0	45°	VG 95343 T08 B 001 A	413-01180
1302-1-G	27.0	13.0	27.0	13.0	7.0	3.5	92.0	41.0	2.5	2.5	1.0	36.0	45°	VG 95343 T08 B 004 A	413-02180
1303-1-G	27.0	14.0	27.0	14.0	13.0	7.5	145.0	70.0	2.5	2.5	1.5	54.0	45°	VG 95343 T08 B 002 A	413-03180
1311-1-G	30.4	15.2	30.4	15.2	20.3	10.2	82.6	31.8	2.5	2.5	1.8	50.8	30°	VG 95343 T08 B 003 A	413-11180

All dimensions in mm. Subject to technical changes. For these moulded shapes a wide range of material / adhesive combinations are available. Please refer to the Moulded Shapes catalogue.



For product specific approvals and specifications please refer to the Appendix.



Add items to your watchlist!

[www.HT.click/49-293](http://www.HT.click/49-293)

