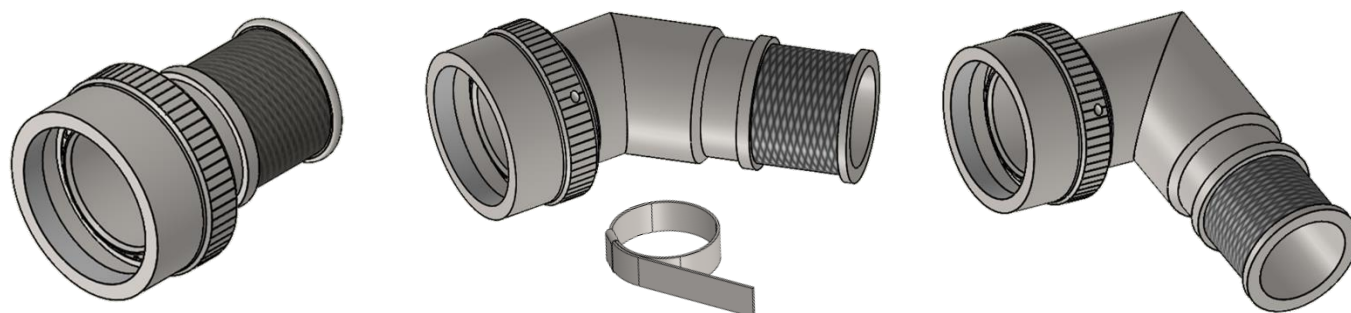
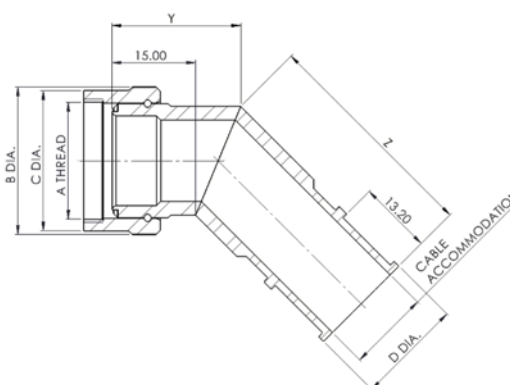
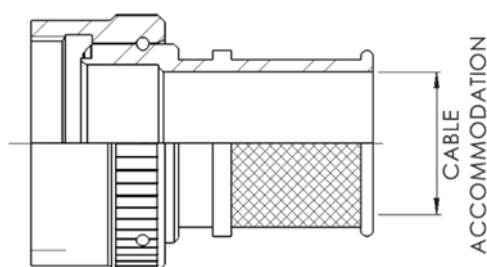
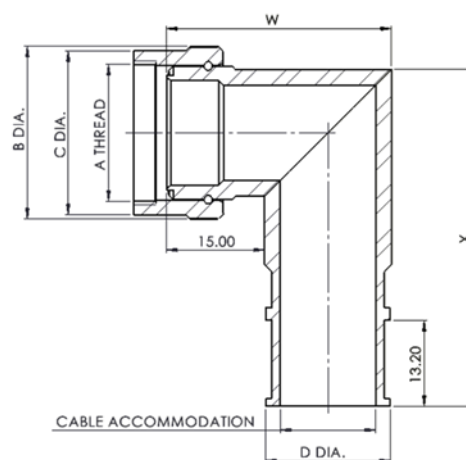
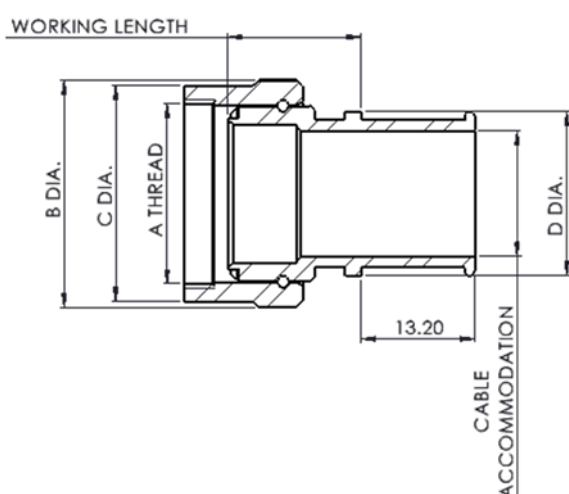


## KC2500 Series for MIL-C-5015 Connectors

### EMC Circular Backshell with band strap



- Light weight and compact backshell suitable for all standard circular connectors
- High levels of EMC and Environmental performance
- Overall screening by band strap system
- Customers can continue to use the termination method of their choice with 'NS' option
- Teeth on backshell body mesh with connector teeth for positive lock
- Blind teeth for increased EMC screening with internal taper for enhanced environmental sealing with the connector
- Additional environmental sealing of cable system by heat shrink boot
- Overall environmental seal with heat shrink boot is equal to or higher than the IP rating of the connector



#### KEC LIMITED

Orpheus House, Calleva Park, Aldermaston, Reading, Berkshire RG7 8TA England

[www.kec.co.uk](http://www.kec.co.uk)

Tel: +44 (0)118 981 1571 email: [sales@kec.co.uk](mailto:sales@kec.co.uk)

# PRODUCT INFORMATION

## EXAMPLE PART NUMBER

KC2501 - 20 – 18 W 1 – 24 -XXX

Material - Table 1

Connector Series - Table 3

Shell Size - Table 2

Finish - Table 5

Working Length - Note 2

Cable Entry - Table 4

Mod Code - Note 5

TABLE 2 (See Notes 1, 3 and 5)

SHELL SIZE	A THREAD 21 SERIES	A THREAD 21A SERIES		B DIA MAX	C DIA MAX	W DIM MAX	X DIM MAX	Y DIM MAX	Z DIM MAX
08	1/2" - 20 UNF	NA		18.00	15.95	27.00	34.00	20.50	27.00
10/10SL	5/8" - 24 UNEF	5/8" - 24 UNEF		21.20	18.95	29.00	35.50	21.00	28.00
12	3/4" - 20 UNEF	NA		23.10	21.65	33.00	40.00	23.00	29.50
14/14S	7/8" - 20 UNEF	3/4" - 20 UNEF		26.60	25.40	35.00	41.50	23.50	30.50
16/16S	1.000" - 20 UNEF	7/8" - 20 UNEF		29.10	28.15	38.00	44.50	25.00	31.75
18	1 1/16" - 18 UNEF	1.000" - 20 UNEF		32.40	30.40	40.00	46.50	26.00	32.50
20	1 3/16" - 18 UNEF	1 1/8" - 18 UNEF		34.60	33.95	43.50	50.00	27.00	34.00
22	1 5/16" - 18 UNEF	1 1/4" - 18 UNEF		38.10	36.70	46.50	53.50	28.50	35.50
24	1 7/16" - 18 UNEF	1 3/8" - 18 UNEF		42.90	40.65	49.00	55.50	29.50	36.50
32	2.000" - 18 UNS	1 7/8" - 16 UN						54.0	51.5

TABLE 3 (See Note 3)

SERIES CODE STRAIGHT	SERIES CODE 45° ANGLE	SERIES CODE 90° ANGLE	CONNECTOR TYPE (CONNECTOR SERIES VARIES ACCORDING TO REAR THREAD)	SHELL SIZE
21	41	81	MIL-C-5015 MANUFACTURER SPECIFIC. CHECK THREAD SIZE	08-32
21A	41A	81A	MIL-C-5015 MANUFACTURER SPECIFIC. CHECK THREAD SIZE	08-32

TABLE 1

MATERIAL CODE	
01	ALUMINIUM
02	STAINLESS STEEL
03	ALI BRONZE

TABLE 4 (see Note 5)

ENTRY CODE	CABLE ACCOMODATION	D DIA
08	7.5	12.3
10	9.3	13.1
12	12.7	17.4
14	14.4	19.2
16	17.8	21.5
18	19.6	23.7
20	24.1	27.9
22	27.0	30.9
24	29.2	33.5
26 - 32	SPECIAL ORDER	

TABLE 5

FINISH CODE	
G	BLACK ZINC NICKEL
J	ELECTROLESS NICKEL
W	CADMIUM + OLIVE DRAB
Z	ZINC COBALT + OLIVE DRAB
L	Ni-PTFE

### NOTES:

- The W,X,Y,Z, lengths given on the data sheet are based on shell size and cable entry size being equal, i.e. 14/14, 20/20. If there is a step up or a step down required in the finished part number, a small amount of additional length is required to allow for the transition.
- Working Length in 12.7mm (0.5in) increments. for example, working length 4 = 50.8mm (2in). KC2500 minimum working length is 1. (straight backshells only – omit on angled versions). Angled dimensions are shown as W X Y and Z.
- Use 21/21a for straight backshells, 41/41a for 45° backshells & 81/81A for 90° BACKSHELLS. CONNECTOR SERIES VARIES ACCORDING TO MANUFACTURER AND REAR THREAD SIZE. **PLEASE CHECK THREAD SIZE IF IN DOUBT CONSULT FACTORY**
- A thread sizes shown in TABLE 2 for STRAIGHT SERIES CODE backshells also apply to equivalent 45° ANGLE and 90° ANGLE SERIES CODES.
- GREYED OUT SIZES ARE SPECIAL ORDER ONLY. LARGER SHELL SIZES ARE AVAILABLE ON REQUEST
- Used for modification to standard parts. **if no band strap is required add the mod code: NS**

### KEC LIMITED

Orpheus House, Calleva Park, Aldermaston, Reading, Berkshire RG7 8TA England

www.kec.co.uk

Tel: +44 (0)118 981 1571 email: sales@kec.co.uk