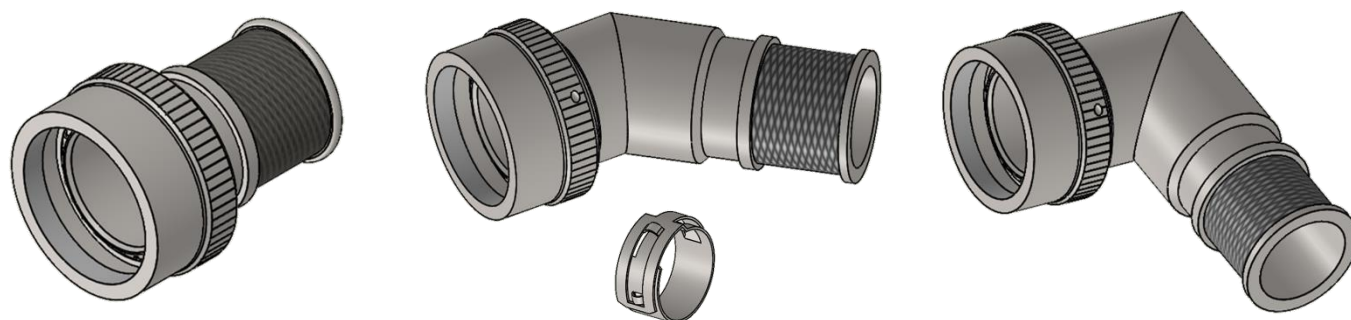
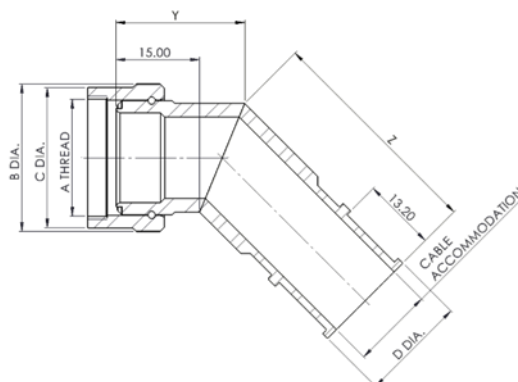
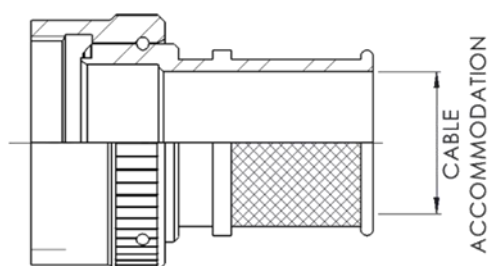
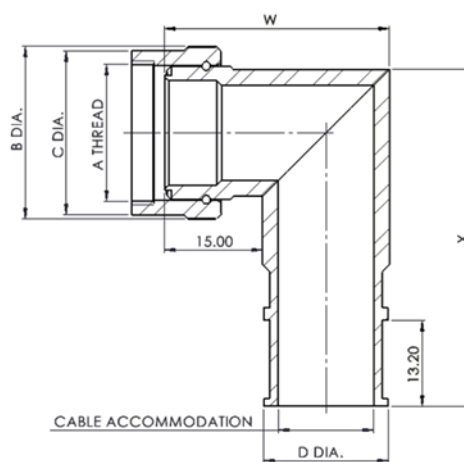
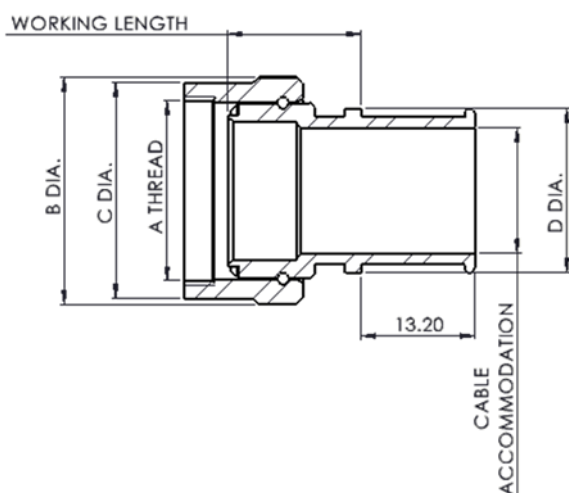


KC2700 Series for MIL-C-5015 Connectors

EMC Circular Backshell with reworkable band clamp



- Light weight and compact backshell suitable for all standard circular connectors
- High levels of EMC and Environmental performance
- Overall screening by reworkable band clamp
- Rapid assembly with no special tools required and the system is easily reworked
- Teeth on backshell body mesh with connector teeth for positive lock
- Blind teeth for increased EMC screening with internal taper for enhanced environmental sealing with the connector
- Additional environmental sealing of cable system by heat shrink boot
- Overall environmental seal with heat shrink boot is equal to or higher than the IP rating of the connector



KEC LIMITED

Orpheus House, Calleva Park, Aldermaston, Reading, Berkshire RG7 8TA England

www.kec.co.uk

Tel: +44 (0)118 981 1571 email: sales@kec.co.uk

EXAMPLE PART NUMBER

KC2701 - 20 - 18 W 1 - 24 -XXX

Material - Table 1

Connector Series - Table 3

Shell Size - Table 2

Finish - Table 5

Working Length - Note 2

Cable Entry - Table 4

Mod Code - Note 5

TABLE 2 (See Notes 1, 3 and 5)

SHELL SIZE	A THREAD 21 SERIES	A THREAD 21A SERIES		B DIA MAX	C DIA MAX	W DIM MAX	X DIM MAX	Y DIM MAX	Z DIM MAX
08	1/2" - 20 UNF	NA		18.00	15.95	27.00	34.00	20.50	27.00
10/10SL	5/8" - 24 UNEF	5/8" - 24 UNEF		21.20	18.95	29.00	35.50	21.00	28.00
12	3/4" - 20 UNEF	NA		23.10	21.65	33.00	40.00	23.00	29.50
14/14S	7/8" - 20 UNEF	3/4" - 20 UNEF		26.60	25.40	35.00	41.50	23.50	30.50
16/16S	1.000" - 20 UNEF	7/8" - 20 UNEF		29.10	28.15	38.00	44.50	25.00	31.75
18	1 1/16" - 18 UNEF	1.000" - 20 UNEF		32.40	30.40	40.00	46.50	26.00	32.50
20	1 3/16" - 18 UNEF	1 1/8" - 18 UNEF		34.60	33.95	43.50	50.00	27.00	34.00
22	1 5/16" - 18 UNEF	1 1/4" - 18 UNEF		38.10	36.70	46.50	53.50	28.50	35.50
24	1 7/16" - 18 UNEF	1 3/8" - 18 UNEF		42.90	40.65	49.00	55.50	29.50	36.50
32	2.000" - 18 UNS	1 7/8" - 16 UN						54.0	51.5

TABLE 3 (See Note 3)

SERIES CODE STRAIGHT	SERIES CODE 45° ANGLE	SERIES CODE 90° ANGLE	CONNECTOR TYPE (CONNECTOR SERIES VARIES ACCORDING TO REAR THREAD)	SHELL SIZE
21	41	81	MIL-C-5015 MANUFACTURER SPECIFIC. CHECK THREAD SIZE	08-32
21A	41A	81A	MIL-C-5015 MANUFACTURER SPECIFIC. CHECK THREAD SIZE	08-32

TABLE 1

MATERIAL CODE	
01	ALUMINIUM
02	STAINLESS STEEL
03	ALI BRONZE

TABLE 4 (see Note 5)

ENTRY CODE	CABLE ACCOMODATION	D DIA
08	7.5	12.3
10	9.3	13.1
12	12.7	17.4
14	14.4	19.2
16	17.8	21.5
18	19.6	23.7
20	24.1	27.9
22	27.0	30.9
24	29.2	33.5
26 - 32	SPECIAL ORDER	

TABLE 5

FINISH CODE	
G	BLACK ZINC NICKEL
J	ELECTROLESS NICKEL
W	CADMIUM + OLIVE DRAB
Z	ZINC COBALT + OLIVE DRAB
L	Ni-PTFE

NOTES:

- The W,X,Y,Z, lengths given on the data sheet are based on shell size and cable entry size being equal, i.e. 14/14, 20/20. If there is a step up or a step down required in the finished part number, a small amount of additional length is required to allow for the transition.
- Working Length in 12.7mm (0.5in) increments. for example, working length 4 = 50.8mm (2in). KC2500 minimum working length is 1. (straight backshells only – omit on angled versions). Angled dimensions are shown as W X Y and Z.
- Use 21/21a for straight backshells, 41/41a for 45° backshells & 81/81A for 90° BACKSHELLS. CONNECTOR SERIES VARIES ACCORDING TO MANUFACTURER AND REAR THREAD SIZE. **PLEASE CHECK THREAD SIZE IF IN DOUBT CONSULT FACTORY**
- A thread sizes shown in TABLE 2 for STRAIGHT SERIES CODE backshells also apply to equivalent 45° ANGLE and 90° ANGLE SERIES CODES.
- GREYED OUT SIZES ARE SPECIAL ORDER ONLY. LARGER SHELL SIZES ARE AVAILABLE ON REQUEST
- Used for modification to standard parts.

KEC LIMITED

Orpheus House, Calleva Park, Aldermaston, Reading, Berkshire RG7 8TA England

www.kec.co.uk

Tel: +44 (0)118 981 1571 email: sales@kec.co.uk